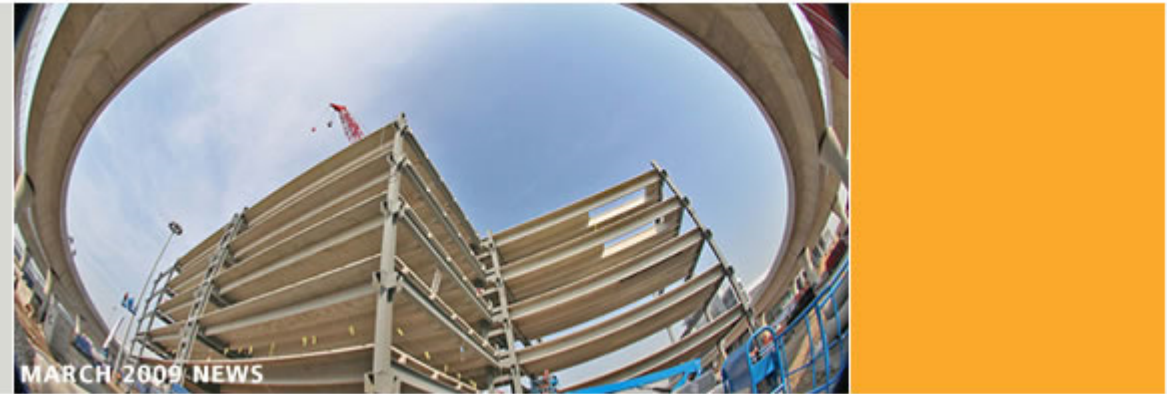


If you cannot read the message below, you can see it in your browser by clicking [here](#).

SIMON DESIGN ENGINEERING LLC



JETBLUE AIRWAYS YELLOW GARAGE @ JOHN F. KENNEDY INTERNATIONAL AIRPORT • QUEENS, NEW YORK

WHEN THE GOING GETS TOUGH: *How do You Differentiate Yourself?*

As the economy continues to spiral out of control, it is creating ground fertile for original ideas and innovative concepts. Now is an opportune time for companies to step forward and reassert themselves in a new light. Simon Design has emerged as a leading engineering firm by providing superior tailored professional services well beyond those of typical structural consultants.



JetBlue's new Terminal 5, **T5**, needed proximate parking for fifteen hundred vehicles. The Port Authority of New York and New Jersey planned to relocate existing, on-site utilities prior to commencing the construction of the new six-level **T5** parking structure. However, once construction began it became apparent that the existing utilities could not be relocated in a timely manner and that the project delivery schedule would be compromised.

In response, SDE developed alternative design solutions with the assistance of [Building Information Modeling \(BIM\)](#) to address the utility conflicts and construction scheduling while monitoring site and utility conditions. Simon Design utilized BIM to accurately layout and design the project's foundations and superstructure relative to the known conditions. The project's BIM also facilitated quick superstructure and foundation redesign in response to the daily discoveries of existing utilities, with a turnaround of 24 hours or less.

Simon Design successfully redesigned over half of the foundations, designed additional transfer girders, and relocated the pedestrian core without consequence to the project's fabrication and construction schedule. The project was ultimately completed ahead of schedule and the opening of JetBlue's **T5**... [MORE...](#)

SDE provides JetBlue Airways with the following services: Conceptual Project Design, Project Programming, Value Engineering and Management, Parking Consulting, Structural Engineer of Record, Project Coordination, Material Evaluation Services, Quality Assurance, and Project Closeout.

Informational Tidbit: [Estimating Lost Labor Productivity in Construction Claims](#)

SIMON DESIGN ENGINEERING specializes in providing PROFESSIONAL CONSULTING ENGINEERING SERVICES to Owners, Architects, Developers, Public Agencies, and Builders on unique structures and parking facilities throughout the United States. [MORE...](#)

We'd love to hear from you - email us at INFO@SDE-US.COM
©2009 SIMON DESIGN ENGINEERING, LLC · 42 WASHINGTON ST. · STE.300 · WELLESLEY, MA
TEL: 781.237.2226 · WWW.SDE-US.COM